

Hines

TRIDEL<sup>®</sup>  
BUILT FOR LIFE

# SKY PENTHOUSE 1

AQUALUNA<sup>™</sup>  
LUXURY BY THE LAKE

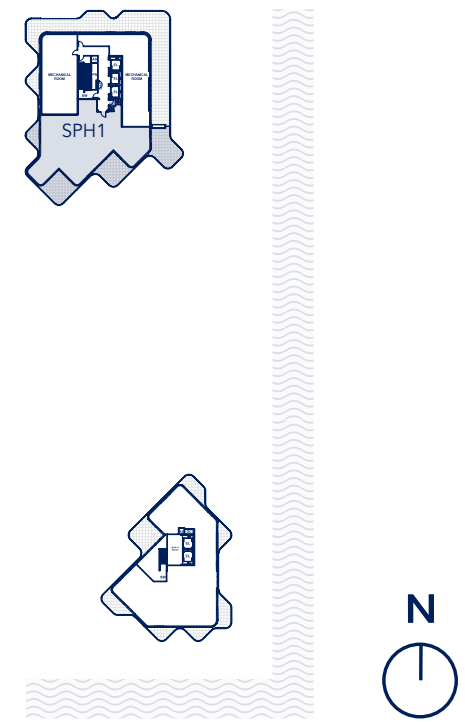


# SPH1

3 Bedrooms + Family Room + Den,  
4 Bathrooms, 2 Powder Rooms,  
5 Terraces, 1 Balcony

Indoor Living Space 4,622 ft<sup>2</sup>  
Outdoor Living 1,683 ft<sup>2</sup>  
Total Living Space 6,305 ft<sup>2</sup>

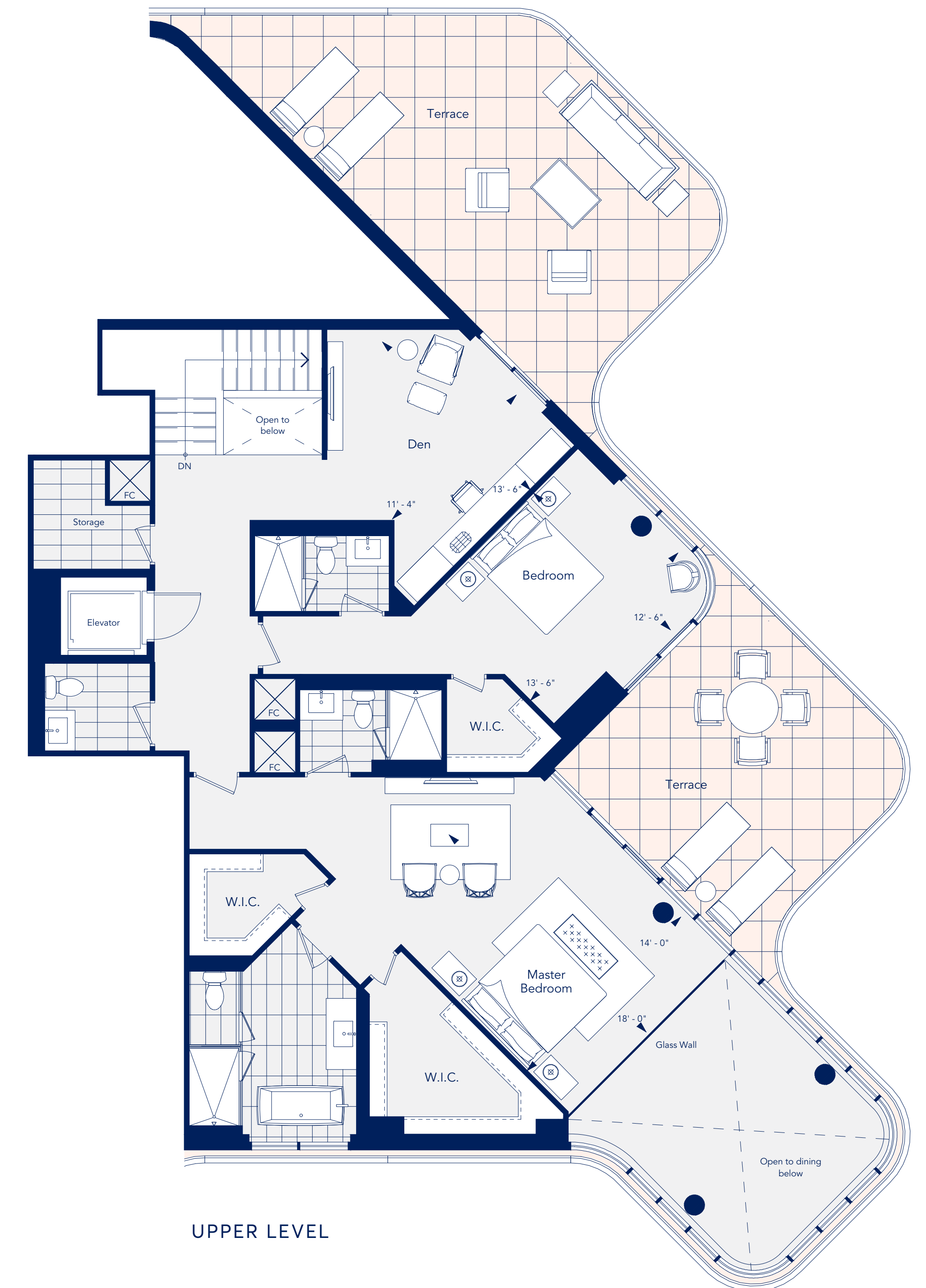
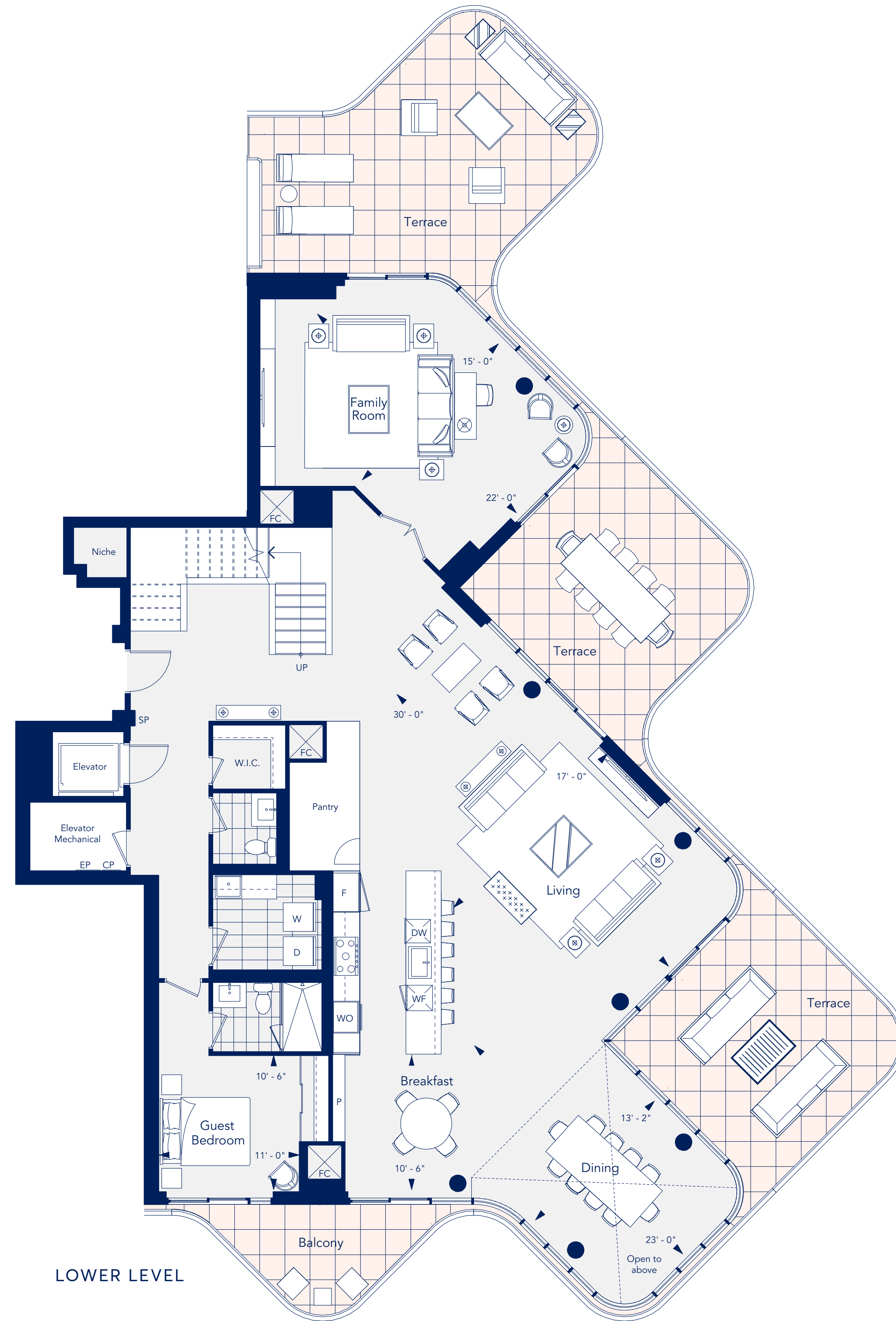
## FLOOR SKY PENTHOUSE



## ELEVATED LIVING

Your Aqualuna home includes only the most extraordinary features and finishes. From a chef-inspired kitchen fully-equipped with a suite of premium Miele appliances, to quiet and comfortable acoustic engineered hardwood flooring, every refined detail creates a living experience that's simply a cut above.

Spacious terraces outfitted with a light fixture, gas line, and hose bib mean summertime barbecues and private garden retreats are just some of the possibilities waiting to be brought to life by your imagination. Innovative and intuitive smart home technology adds convenience and peace of mind to your every waking moment.



**BAYSIDE** | A HINES MASTER  
T O R O N T O | PLANNED COMMUNITY.

*Redefining life on the water's edge.*

[tridel.com](http://tridel.com)